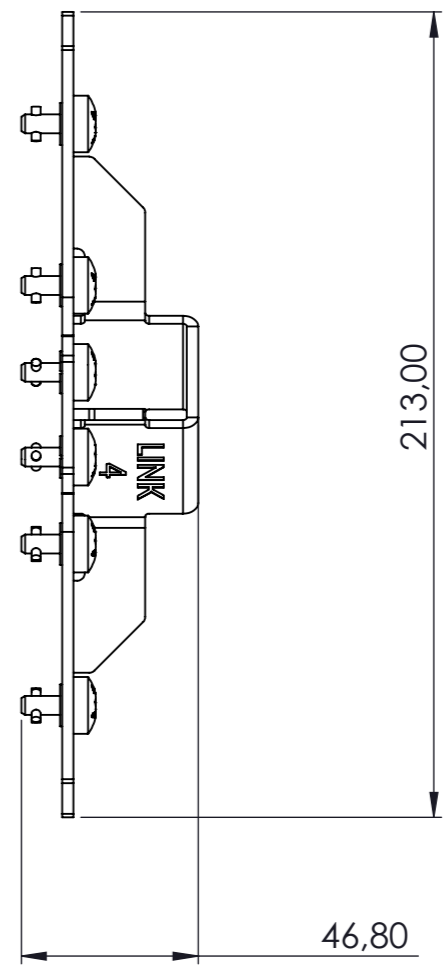
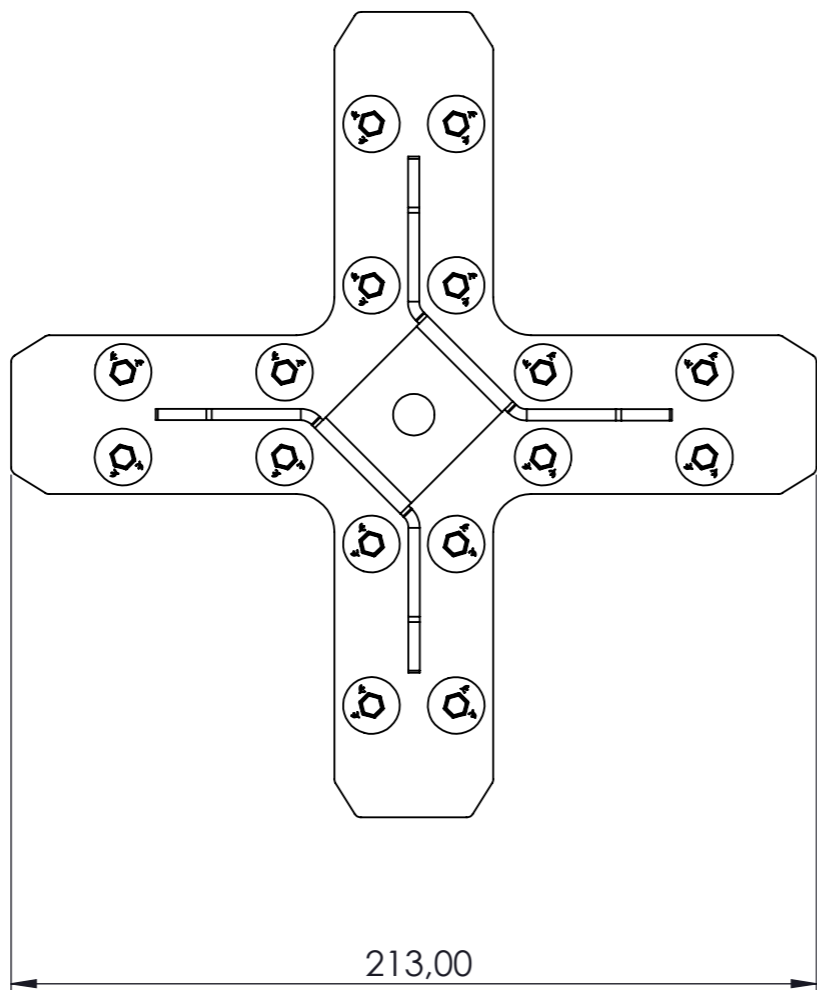
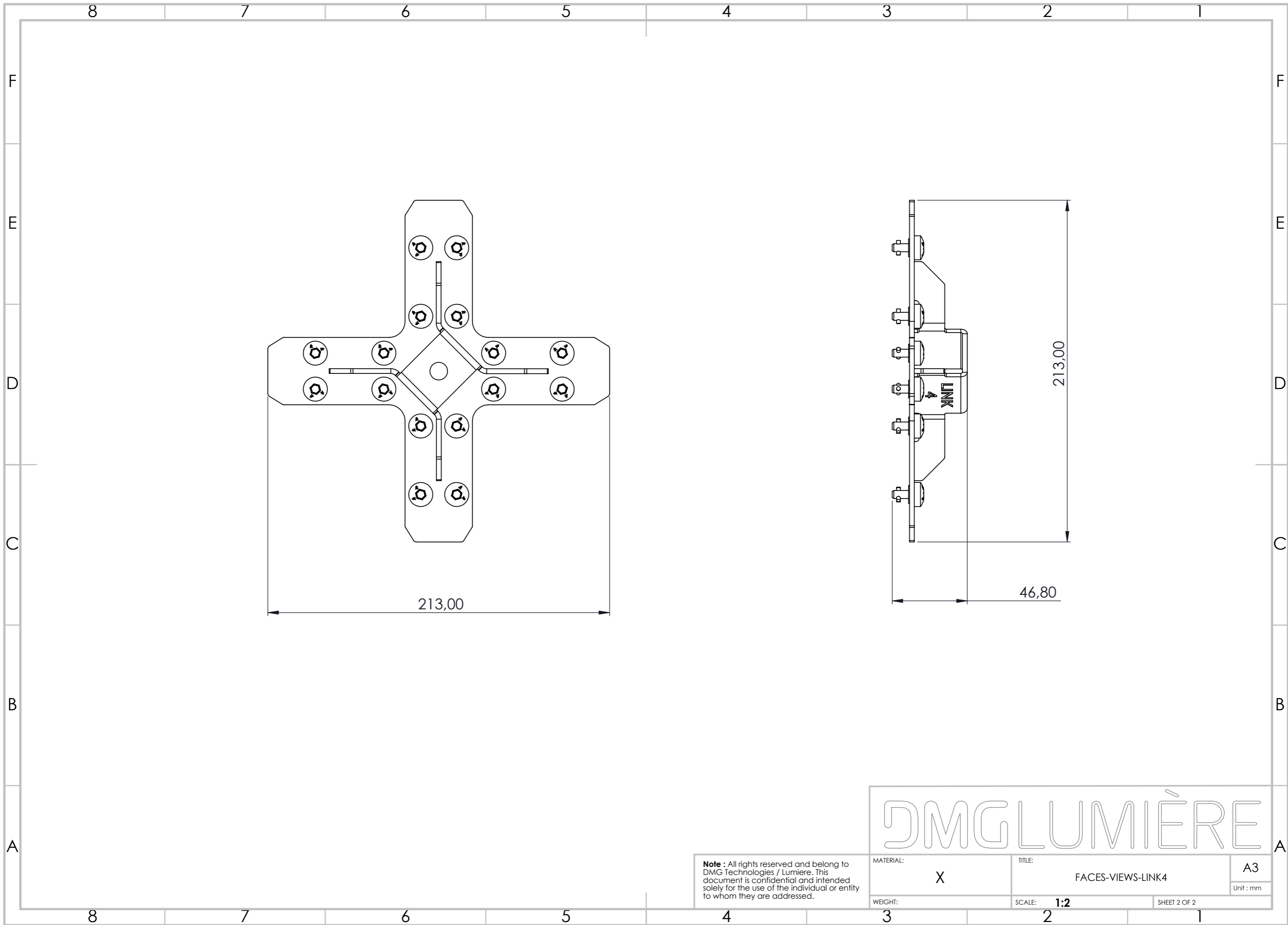


To use with standard clamps and hooks
Bolt diameter : M10
Bolt depth (under clamp base) : 30mm max.

DMGLUMIÈRE

Note : All rights reserved and belong to DMG Technologies / Lumiere. This document is confidential and intended solely for the use of the individual or entity to whom they are addressed.

MATERIAL: X	TITLE: FACES-VIEWS-LINK4	A3 Unit : mm
WEIGHT:	SCALE: 1:1	SHEET 1 OF 2



DMGLUMIÈRE

Note : All rights reserved and belong to DMG Technologies / Lumiere. This document is confidential and intended solely for the use of the individual or entity to whom they are addressed.

MATERIAL:	X	TITLE:	FACES-VIEWS-LINK4	A3
WEIGHT:		SCALE:	1:2	Unit : mm
			SHEET 2 OF 2	